

**Case 24 Leipzig 11:
female, 77 years**

Subacute, complicated type-b-dissection

Operators: D. Branzan, A. Schmidt

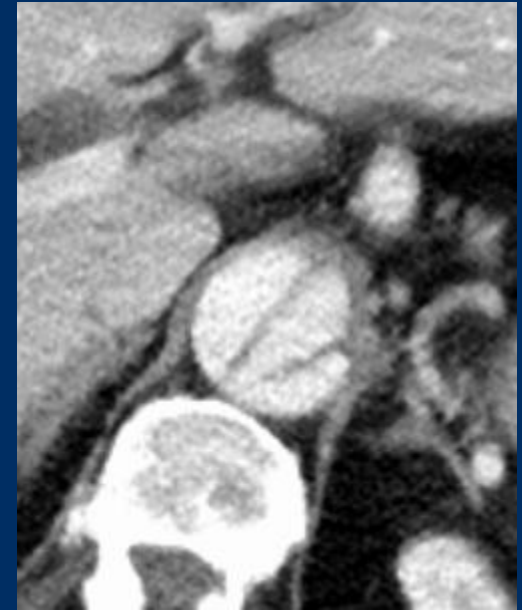
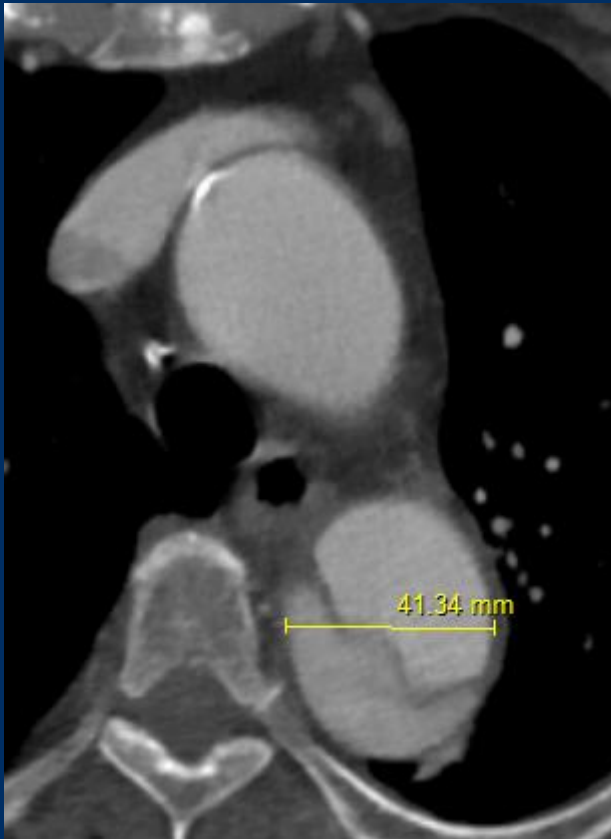
Case 24 Leipzig 11: female, 77 years

- **Clinical data:**
 - Subacute, complicated type-b dissection,
 - Untractable, recurrent pain-episodes since 12/2020
 - Permanent atrial fibrillation
 - CKD, GFR 55ml/min

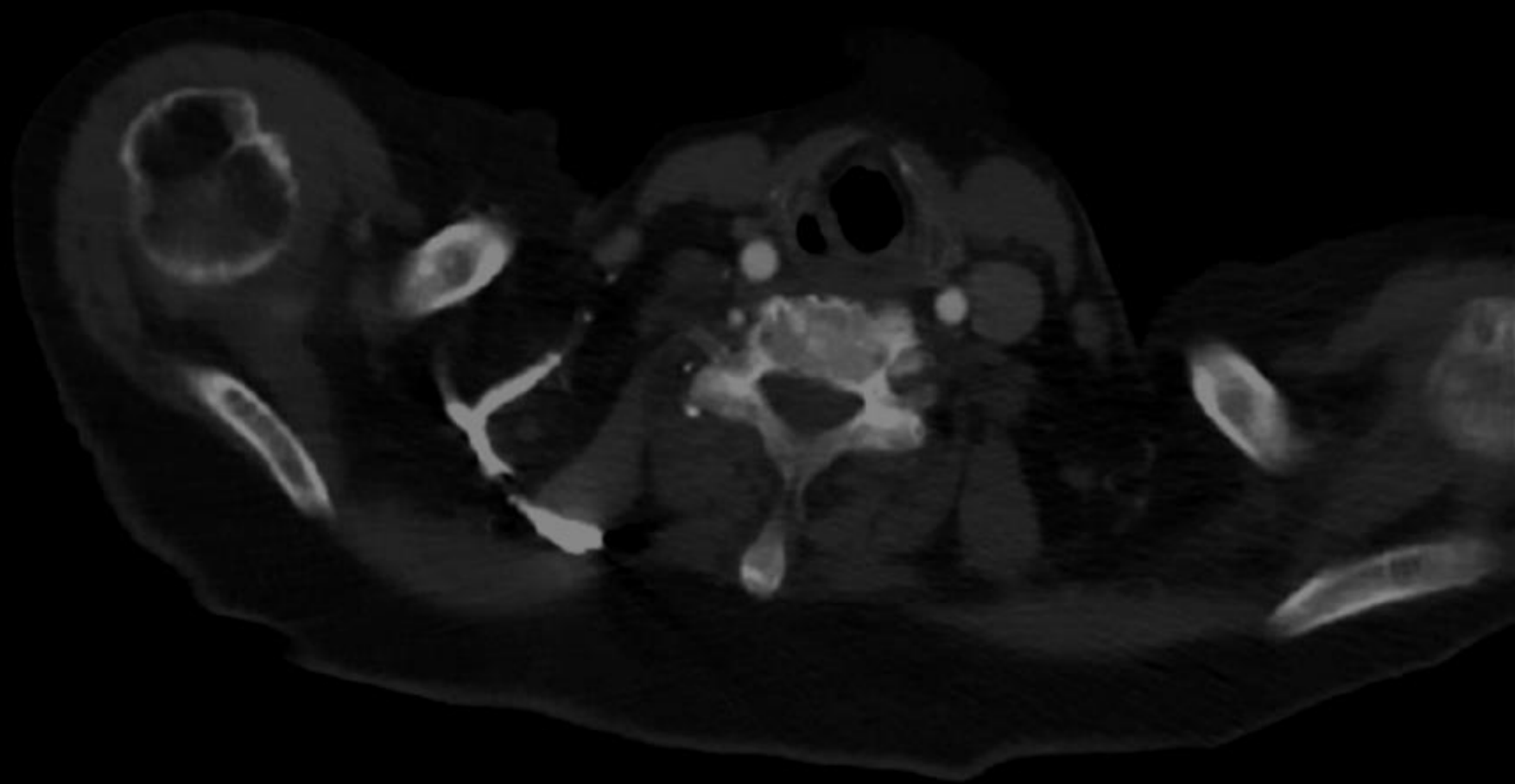
Case 24 Leipzig 11: female, 77 years

- **Risk factors:**
 - Hypertension
 - Diabetes mellitus type 2
 - HLP
 - Adipositas

Case 24 Leipzig 11: female, 77 years



1 month progression from max. diameter 37 to 41 mm





Case 24 Leipzig 11: female, 77 years

- **Procedural Steps:**
 - Bilateral femoral access
 - Proglide-preclosure right groin
 - IVUS to confirm guidewire-position in the true lumen and confirm CT-measurements
 - Stentgraft-implantation (Conformable TAG)

Case 24 Leipzig 11: female, 77 years



Conformable TAG