

**Case 18 Leipzig 7:  
female, 74 years**

**Long SFA-occlusion left**

**Operator: A. Schmidt, A. Fischer**

# Case 18 Leipzig 7: female, 74 years

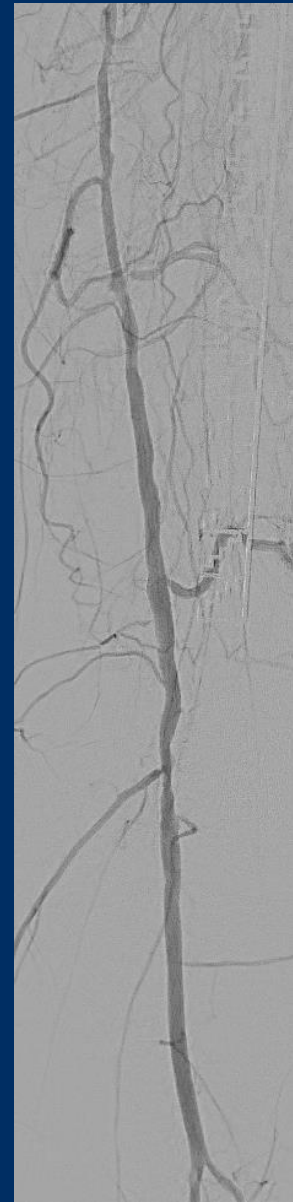
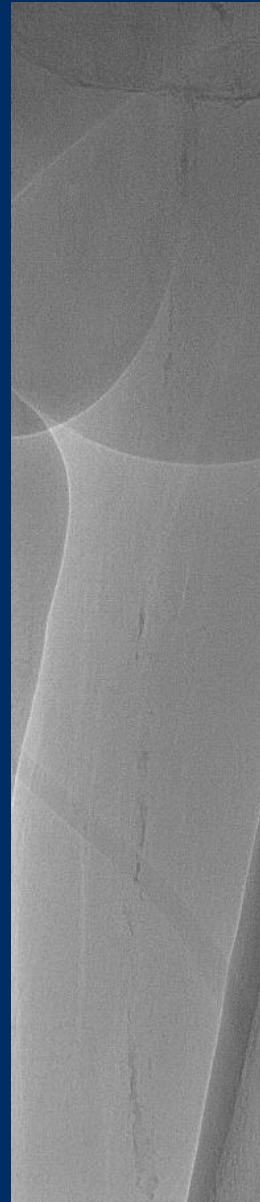
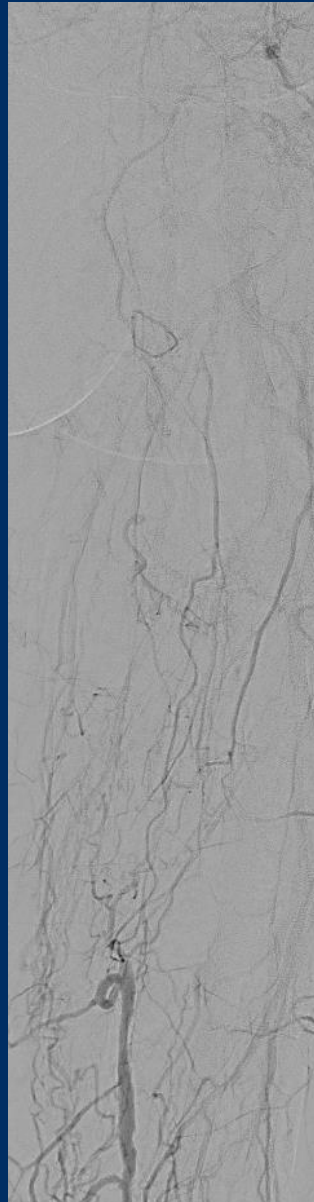
- **Clinical data:**

- Severe claudication left calf, walking capacity 150 m
- ABI left 0.64
- CAD, MI 1998 and 2020
- Permanent atrial fibrillation
- Chronic renal impairment (GFR 60ml/min)

# Case 18 Leipzig 7: female, 74 years

- **Risk factors:**
  - Hypertension
  - Former smoker (40PY)
  - Hyperlipidemia

# Case 18 Leipzig 7: female, 74 years



# Case 18 Leipzig 7: female, 74 years

- **Procedural Steps:**
  - Right femoral access and cross-over approach
  - Passage of the occlusion left SFA
  - In case of failure guidewire passage from antegrade: retrograde approach via distal SFA
  - PTA with DCBs (Passeo Lux)
  - Stenting (Pulsar 18 4Fr. system) on indication

# Case 18 Leipzig 7: female, 74 years

## Passeo-18 Lux Drug-Coated Balloon

Catheter : 0.018"; OTW; 90/130/150 cm  
Sizes:  $\varnothing$ : 2.0 - 7.0 mm;  
Coating: Drug: Paclitaxel; Dose: 3  $\mu\text{g}/\text{mm}^2$   
Matrix: Paclitaxel and BTHC excipient  
Sheath: 4F ( $\varnothing$  2.0-4.0 mm); 5F ( $\varnothing$  5.0-7.0 mm)

## Pulsar-18 T3 Self-expanding Stent

SDS: 0.018"; OTW; 90/135 cm UL  
Sizes:  $\varnothing$ : 4.0 - 7.0 mm;  
L: 20-30-40-60-80-100-120-150-170-200 mm  
Shaft: 4F; hydrophobic coating; tri-axial

## Fortress Reinforced Introducer Sheath

Sizes: 4F, 5F and 6F  
Length: 45cm, 65cm and 90 cm