

The logo for LINC (Lifestyle and Incentive for Nephrology) features the letters 'LING' in a white, sans-serif font. The letters are positioned over a stylized graphic of three curved, overlapping brushstrokes in dark blue, red, and yellow. The background of the slide is a light blue gradient with large, abstract, curved brushstrokes in shades of blue and white.

LINC

Why Sac Regression Matters: How Our Experience with Endurant Informs Our Practice

A detailed black and white line drawing of a cityscape, likely Rotterdam, showing various buildings, streets, and a prominent bridge structure. The drawing is positioned at the bottom of the slide, above the speaker information.

Hence JM Verhagen, MD PhD
Professor and Chief of Vascular Surgery
Erasmus University Medical Center
Rotterdam, The Netherlands



Off-label Disclaimer

This program, sponsored by Medtronic, is intended to educate and train customers on the approved therapies and indicated uses of Medtronic products.

Medtronic product Instructions for Use can be found at <http://manuals.medtronic.com/>.

For questions related to an unapproved use of a Medtronic product, please contact Medtronic's Aortic Office of Medical Affairs. Email: rs.eioma@medtronic.com



Disclosures

Program faculty are paid as consultants for the services provided.

This information is intended only for users in markets where Medtronic products and therapies are approved or available for use as indicated within respective product manuals.

Content on specific Medtronic products and therapies is not intended for users in markets that do not have authorization for use (e.g., ChEVAR is not an approved therapy in the United States).

This program is provided for general education purposes only and should not be considered the exclusive source for this type of information. At all times, it is the professional responsibility of the practitioner to exercise independent clinical judgment in a particular situation. Your results may vary.

The content, case study, images, logos, charts, information, and opinions are provided by and used with permission from the physician faculty and do not necessarily represent the opinions or position of Medtronic. Patient information (names, serial numbers, date, etc.) has been changed or removed to protect the privacy of the patients referenced.



Key Determinants of EVAR Therapy Success

Long-term success for EVAR is mostly dependent on:

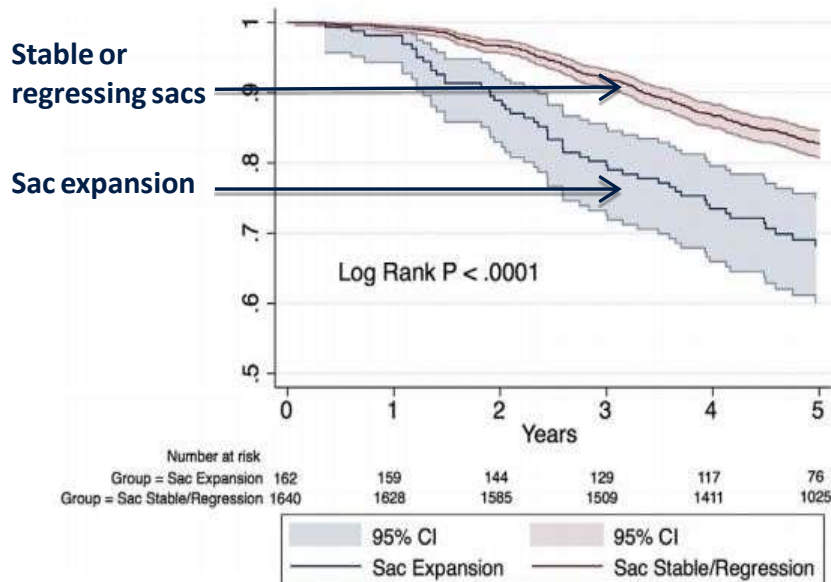
- ✓ Incidence of significant endoleaks
- ✓ Positive AAA sac dynamics



Recent Interest in AAA Sac Dynamics

1- year Sac Dynamics Associated with 5 – year Mortality

VSGNE, 2003 – 2011
N=2,437 EVAR patients

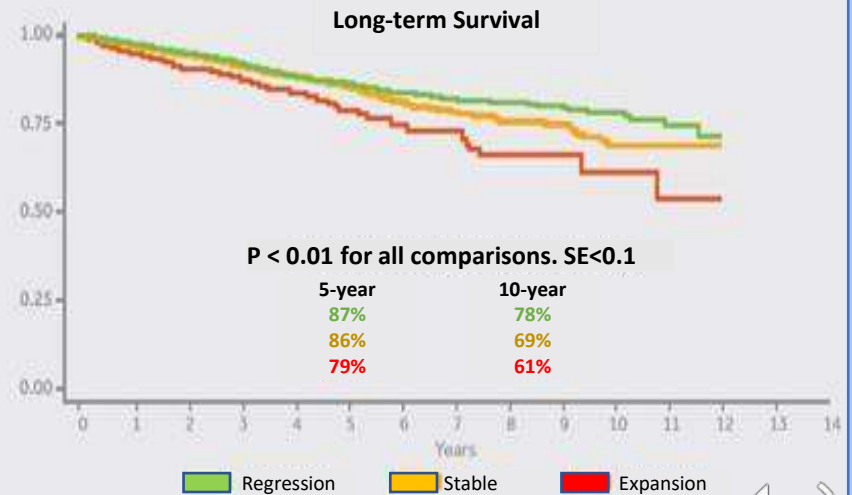


Deery et al. J Vasc Surg 2018;67:157-64
 O'Donnell et al. J Vasc Surg 2019;69(2):414-422

1- year Sac Dynamics Associated with 5 - and 10 - year Mortality

VQI, 2003 – 2017
N=14,827 EVAR patients

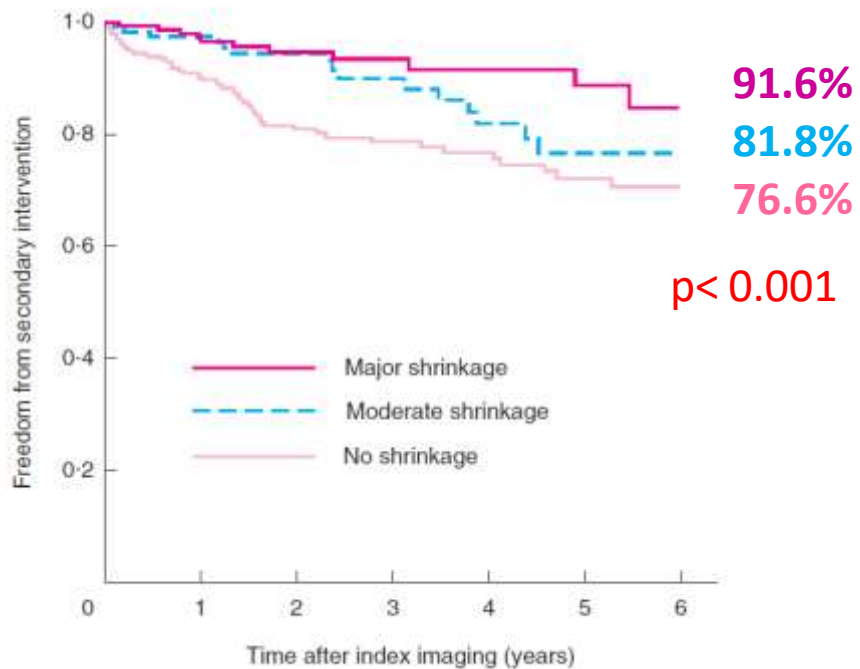
Clinical signals indicate that sac regression is associated with better long-term outcomes



n = 14,817 in VQI study



Sac Dynamic and Post-operative Course



Pts with no shrinkage had significantly more secondary interventions than those with moderate and major shrinkage

Early sac shrinkage predicts a low risk of late complications after endovascular aortic aneurysm repair

F. Bastos Gonçalves^{1,3}, H. Baderkhan^{4,5}, H. J. M. Verhagen¹, A. Wanhainen⁴, M. Björck⁴, R. J. Stolker², S. E. Hoeks² and K. Mami³

BJS 2014; 101: 802–810



Medtronic Stent Graft Evolution

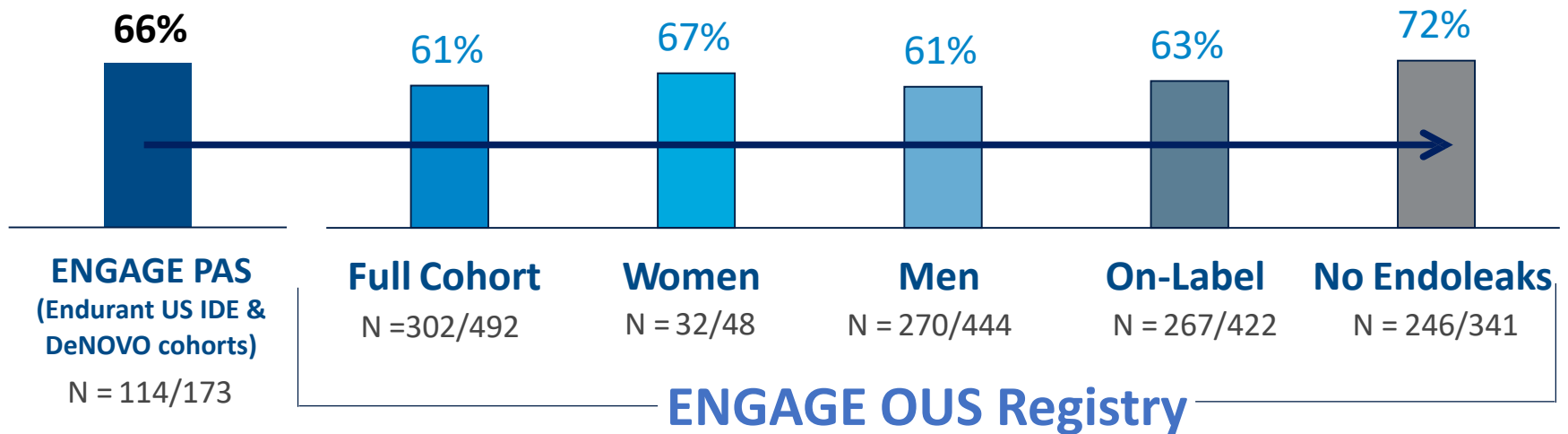
5YR US IDE Trial Results



Singh et al. J of Vasc Med & Biol. 2011
Turnbull et al., J Vasc Surg 2011; 43:157-44
AneuRx™ Clinical Update 4th Ed 2007

Consistent Sac Regression Rates with Endurant

5 YR SAC REGRESSION RATES



per IFU

Real World



Independent Evidence

Excellent long-term outcomes with Endurant in challenging anatomies up to 11 years of follow-up

Follow-up n = 180	Aneurysm Diameter Change		
	Increase \geq 5mm (n)	Stable (n)	Decrease \geq 5mm (n)
0 – 2 years	1	31	19
2 – 5 years	8	19	38
>5 years	12	16	36
Total	21 (11.7%)	66 (36.7%)	93 (51.6%)

Glen L. Benveniste et al. "Long-term Results of 180 Consecutive Patients with Abdominal Aortic Aneurysm Treated with the Endurant Stent Graft System; Ann Vasc Surg 2020; 1–9



Endurant Design Features that Influence Therapy Success



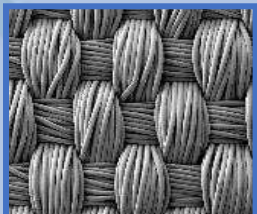
Tip Capture

Accurately and reliably align the proximal edge of the stent-graft
Low need for intra-op adjuncts



M Sealing Stent

Maximizes the seal
Low type Ia endoleak rates



Endurant™ Fabric

Woven High Density multifilament polyester graft fabric
Positive AAA remodeling

ENGAGE OUS Registry – Sac Dynamics

1263

Patients

30

Countries

6

Continents

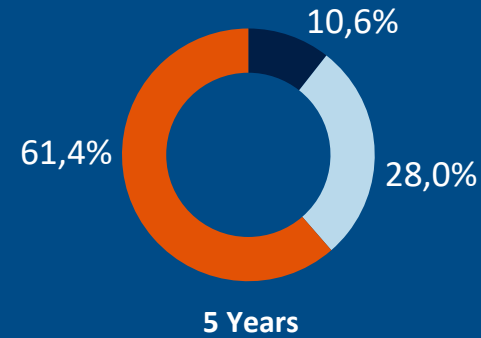
**REAL WORLD
PATIENTS**

Limited inclusion/
exclusion criteria

**REAL WORLD
PRACTICE**

Limited procedural
specifications -
Standard follow-up

SAC DYNAMICS AT 5 YEARS



61.4% of AAA had sac diameter decrease at 5 years

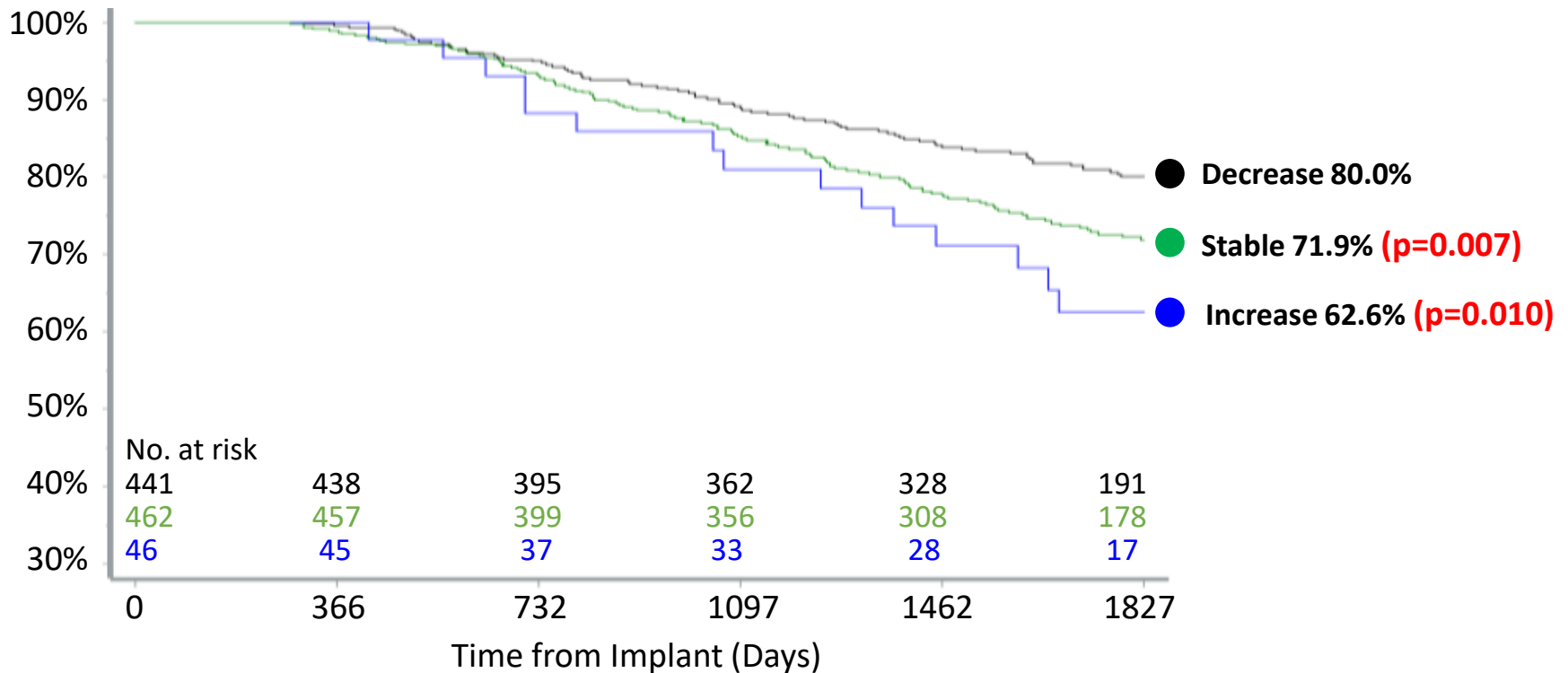
■ Increase ■ Stable ■ Decrease

Tejjink JAW et al., Five Year Outcomes of the Endurant Stent Graft for Endovascular Abdominal Aortic Aneurysm Repair in the ENGAGE Registry, European Journal of Vascular and Endovascular Surgery, <https://doi.org/10.1016/j.ejvs.2019.01.008>



ENGAGE OUS Registry

Freedom from All Cause Mortality

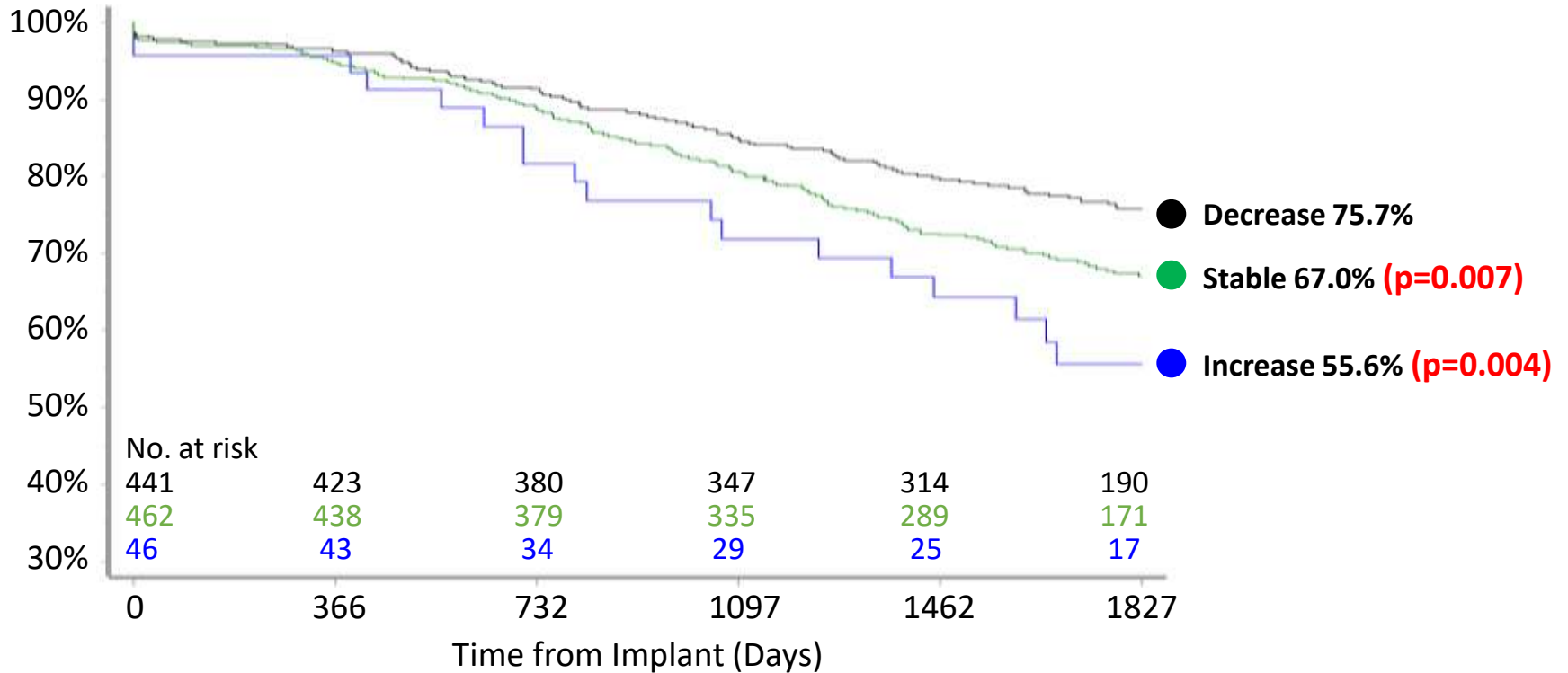


p-values are for comparisons to the sac decrease group



ENGAGE OUS Registry

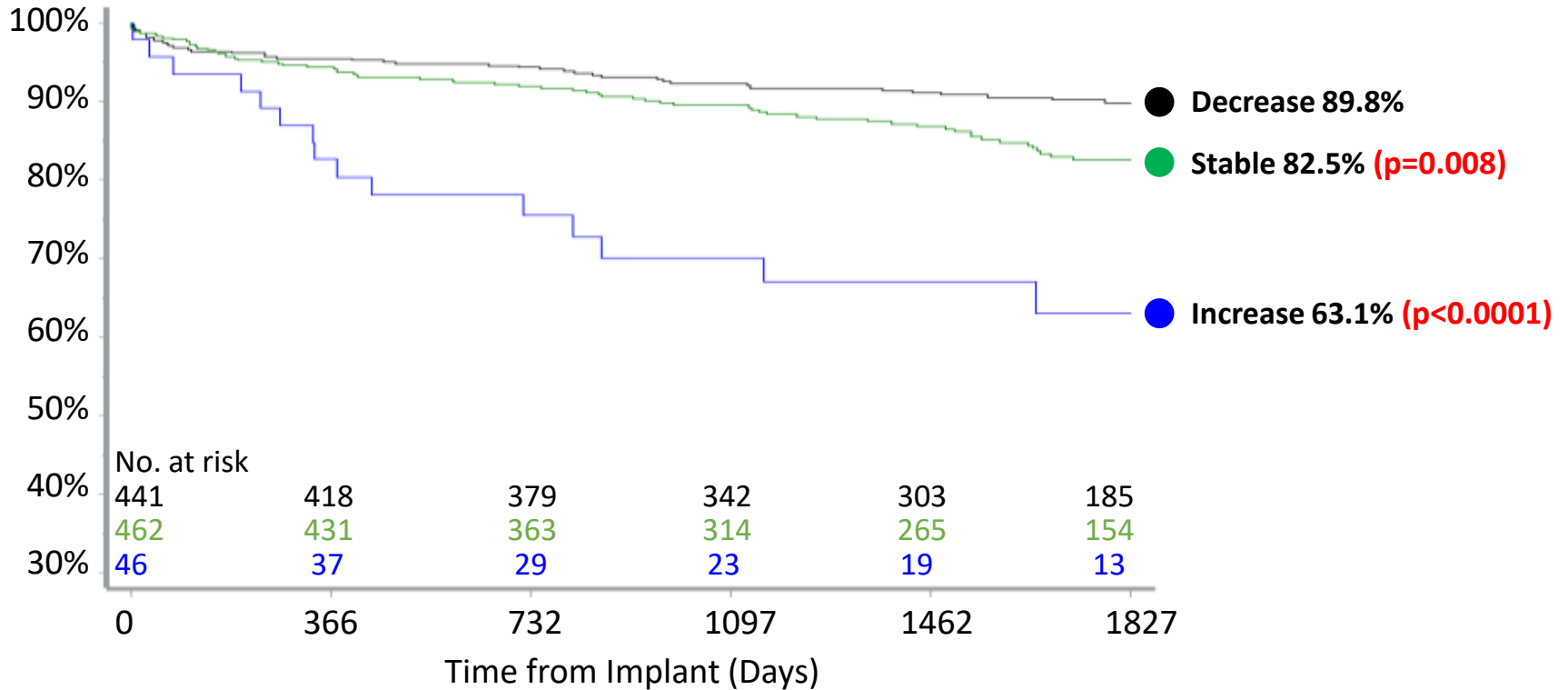
Freedom from Major Adverse Events



p-values are for comparisons to the sac decrease group



ENGAGE OUS Registry: Freedom from Secondary Endovascular Procedures



p-values are for comparisons to the sac decrease group



AAA Sac Dynamics Conclusions



Large EVAR registries show associations between sac dynamics and long-term mortality, with sac regression correlated to improved overall survival



Separation of fixation (supra-renal) and sealing (infra-renal) provides durable proximal performance which leads to favorable results including sac regression



Endurant features drive low endoleak and high sac regression rates while expanding on-label patient applicability




ENGAGE registry showed a significantly better survival, FF Secondary procedures and MAEs for pts with sac regression



The logo consists of the word "LING" in white, uppercase letters, positioned over a stylized graphic of three curved, overlapping brushstrokes in dark blue, red, and yellow. The background of the slide features a light blue gradient with a large, faint, light blue brushstroke that curves across the upper left and middle sections.

LING

Thank you

A detailed black and white line drawing of a cityscape, likely Rotterdam, showing various buildings, streets, and a prominent bridge structure. The drawing is positioned at the bottom of the slide, above the speaker information.

Hence JM Verhagen, MD PhD
Professor and Chief of Vascular Surgery
Erasmus University Medical Center
Rotterdam, The Netherlands

