

**Case 10 Leipzig 5:  
female, 68 years**

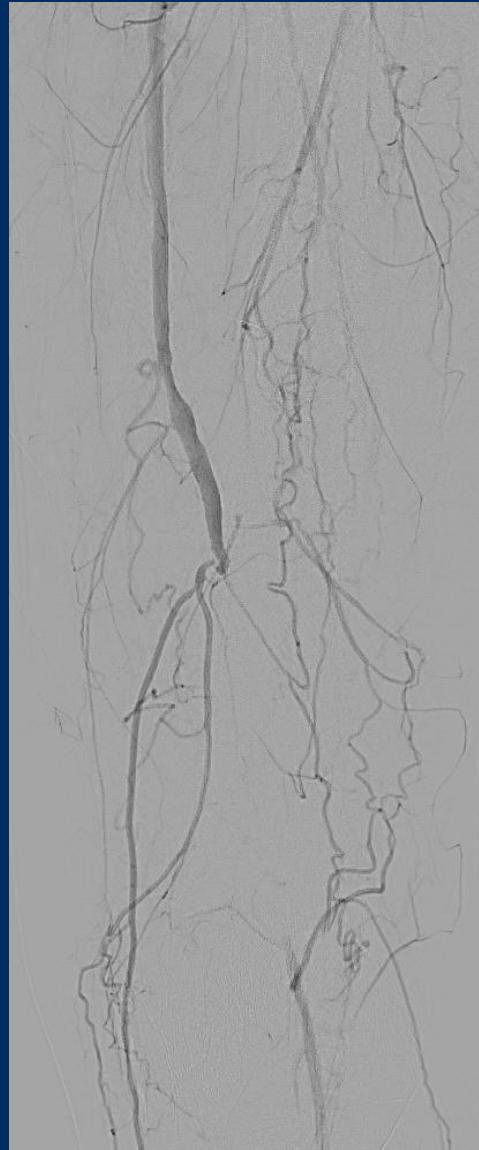
**Chronic occlusion distal SFA/P1**

**Operators: A. Schmidt, S. Düsing**

# Case 10 Leipzig 5: female, 68 years

- **Clinical data:**
  - PAOD Rutherford 3, severe claudication left calf, 150 m, ABI left 0.6
  - Recanalization left EIA 11/2020
  - Hypertension
  - Diabetes type 2
  - Chronic renal impairment

# Case 10 Leipzig 5: female, 68 years



# Case 10 Leipzig 5: female, 68 years

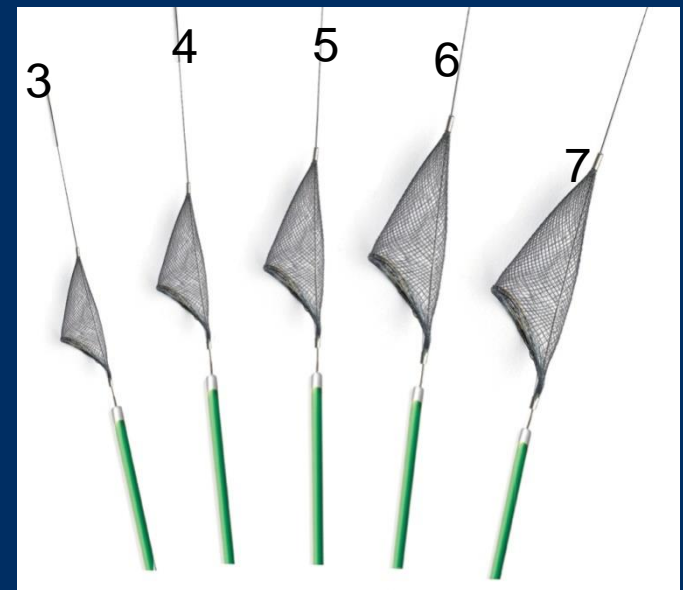
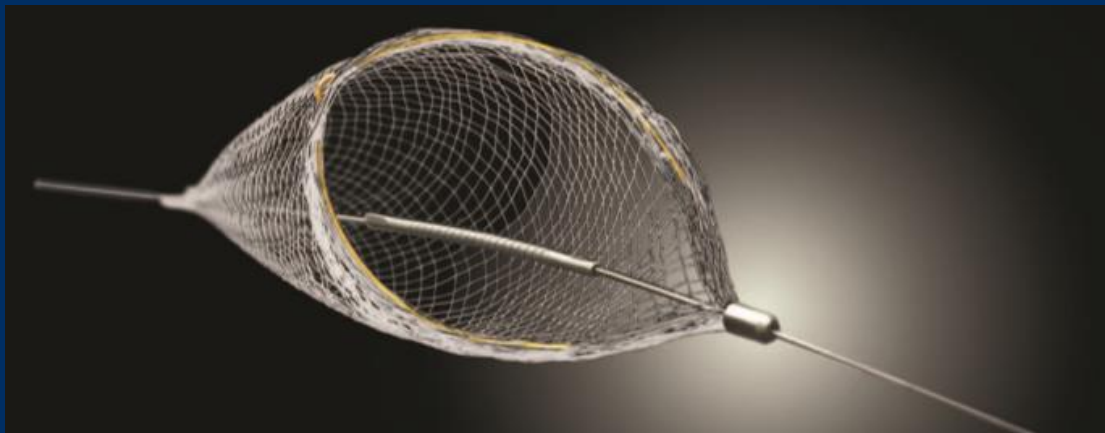
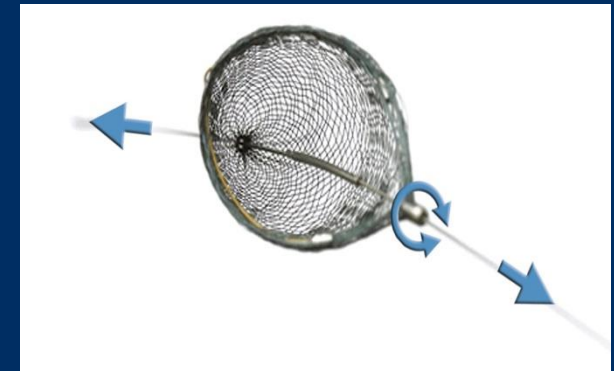
- **Procedural Steps:**

- Right groin retrograde and cross-over approach
- Guidewire passage (in case of failure: retrograde via anterior tibial artery)
- Directional atherectomy (HawkOne LS) under Filter-protection (Spider FX 7 mm)
- DCB treatment (In.Pact Pacific)

# Case 10 Leipzig 5: female, 68 years

## The SpiderFX™ Medtronic

- Guidewire 0.014" - 0.018"
- 5Fr sheath compatible
- Wire length 190 cm or 320 cm
- Flexible nitinol braid filter available in 5 sizes (mm)



# HawkOne – Directional Atherectomy System Medtronic

## TREAT All Morphologies

## STREAMLINE Procedural Efficiency

Just as the name implies, the all-new HawkOne directional atherectomy system is one device that treats all morphologies, including severe calcium, and offers procedural efficiency with enhanced cutting, crossing and cleaning capabilities.

### Enhanced Cutting

- Treat calcified lesions up to **two times** more effectively.
- Design enhancements provide consistent and predictable cutting plus improved engagement in calcium.

### Improved Crossing

- Cross challenging lesions more predictably with a lower crossing profile.
- A **25%** improvement in tracking and deliverability through an indicated 7 F sheath.

**Cutter driver:** Ergonomically redesigned and powered to effectively treat all atherosclerotic plaque.

**Jog:** Optimized for improved engagement in calcified lesions with no increase in cut depth.

**Drive shaft:** A four layered, counter-wound design efficiently transmits power from the cutter driver to the cutter, offering a **25%** improvement in torsional performance.

**Distal Tip:** A tapered, radiopaque distal tip provides enhanced deliverability and visualization under angiography.

**Cutting blade:** Four contoured cutting blades engage and treat all atherosclerotic morphologies.

### Simplified Cleaning

- A preloaded distal flush tool (DFT) means there are fewer steps in the cleaning process.
- Cleaning time is up to **55%** faster.
- Remove tissue easier and quicker with the larger distal flush window.

**HawkOne™**  
Directional Atherectomy System