

# Case 06 Sonneberg 1

## Male, 71 years (K-B)

### Calcified SFA-Occlusion

#### Operators

M. Thieme, H. Krankenberg

# Case 06 Sonneberg 1

## Male, 71 years (K-B)

- **Clinical data:**
  - PAOD Rutherford stage 3
  - Claudication left leg
- **Risk factors:**
  - Diabetes mellitus
  - Nikotin abuse (30 pack-years)

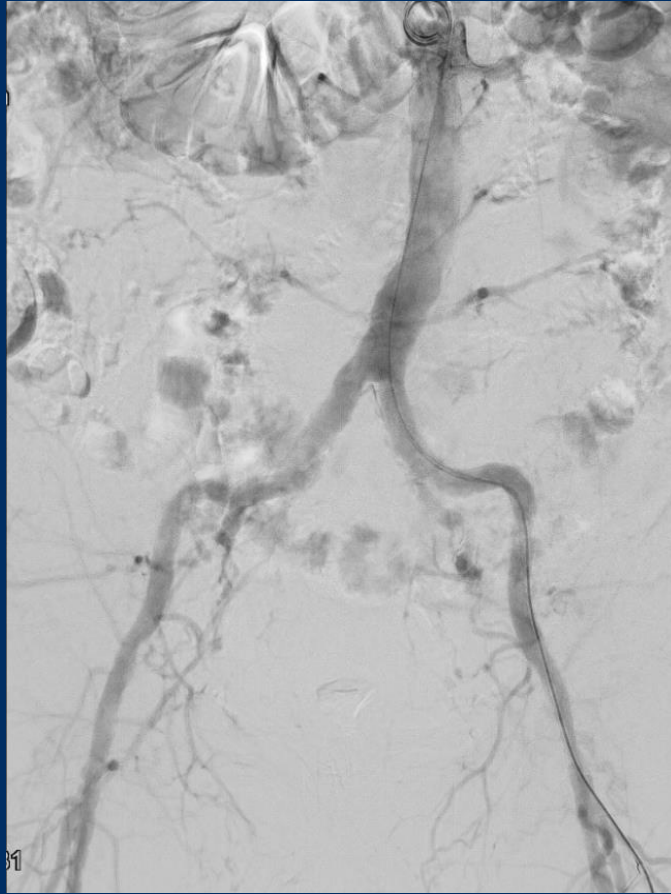
# Case 06 Sonneberg 1

## Male, 71 years (K-B)

- **Present State:**
  - Claudication left leg, walking capacity 70m
  - Previous PTA of right SFA 1/2021
  - ABI 1.09 right leg, 0.52 left leg
- **DUS/ Angiography:**
  - Occlusion of the left SFA
  - High-grade stenosis of TPT
  - One-vessel run-off by PA

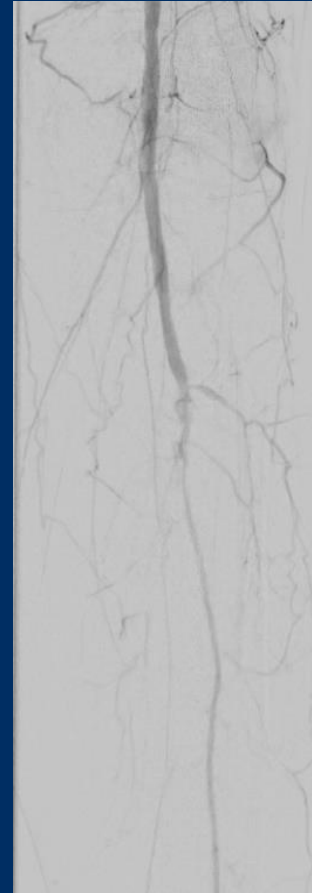
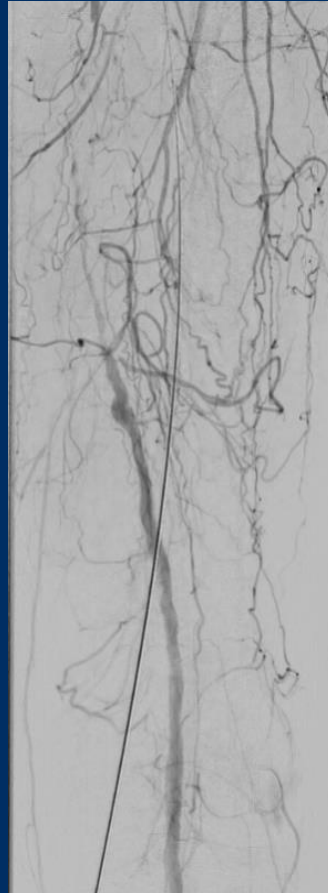
# Case 06 Sonneberg 1

## Male, 71 years (K-B)



# Case 06 Sonneberg 1

## Male, 71 years (K-B)



# Case 06 Sonneberg 1

## Male, 71 years (K-B)

- **Procedural steps:**

- 1. Placement of a 6F/ 45cm cross-over-sheath (DuraSheath, ABMedica)
- 2. Passage of the SFA with 0.035 RADIFOCUS® stiff guide wire (Terumo) and NaviCross® Support Catheter (Terumo), alternative 0.018 V-18™ Control Wire™ (Boston Scientific) and 5/120 Pacific™ Plus PTA catheter OTW 0.018 (Medtronic)
- 3. Go-Back-Reentry device 6F (ABMedica) if necessary
- 4. Predilatation of SFA with 5/120 Pacific™ Plus PTA balloon catheter OTW 0.018 (Medtronic) and 6/150 Ultrascore™ Scoring-Balloon (BARD)
- 5. Dilatation of SFA with 6/150 Luminor35 DEB (iVascular®)
- 6. Spot-Stenting with 7mm IVOLUTION PRO Stent (iVascular®)
- 7. Treatment of TPT if necessary