

**Case 05 Leipzig 4:  
male, 58 years**

**Chronic total occlusion left popliteal  
artery**

**Operators: A. Schmidt, A. Fischer**

# Case 05 Leipzig 4: male, 58 years

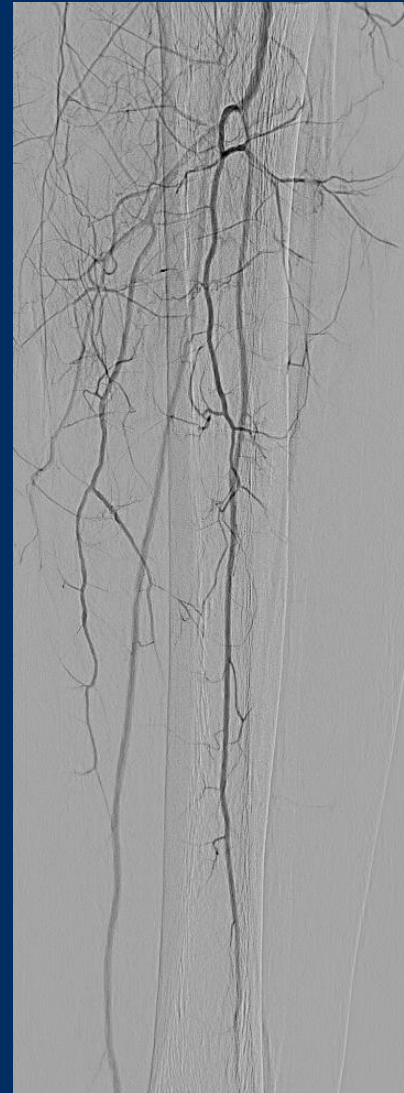
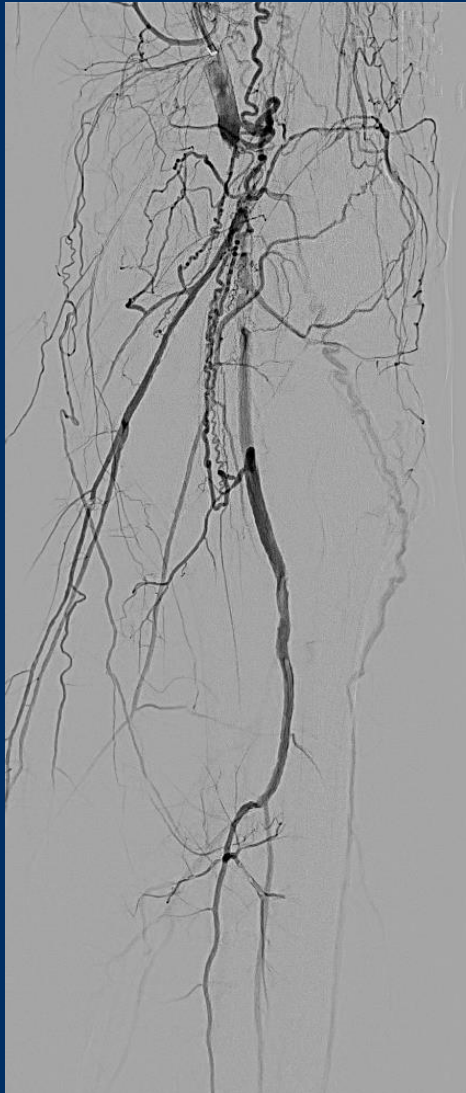
- **Clinical data:**

- PAOD Rutherford 3, severe claudication left calf, walking capacity 50 m
- ABI left 0.52
- Failed recanalization attempt 12/2020
- Previous interventions both sides since 2011

# Case 05 Leipzig 4: male, 58 years

- **Risk factors:**
  - Hypertension
  - Diabetes type 2
  - Hyperlipidemia

# Case 05 Leipzig 4: male, 58 years



# Case 05 Leipzig 4: male, 58 years

- **Procedural steps:**
  - Left antegrade approach
  - Guidewire passage, retrograde puncture if necessary
  - Orbital atherectomy (CSI)
  - DCB-treatment (Acotec)

# CSI's PERIPHERAL ORBITAL ATHERECTOMY SYSTEM

## Sleek Electric-Powered Handle

- Simple device set-up
- Optimum torque transfer to the shaft and crown
- Short overall treatment times

## Crowns

- Micro Crown
- Classic Crown
- Solid Crown



## Prime Control

- Flush saline device

## Simple Speed Settings

## Instant Response On/Off Switch

## Brake

## OAS Pump

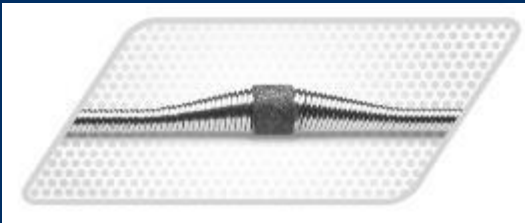
- Mounts directly to an I.V. pole
- Bathers shaft and crown with ViperSlide Lubricant to facilitate smooth device operation



# Case 05 Leipzig 4: male, 58 years

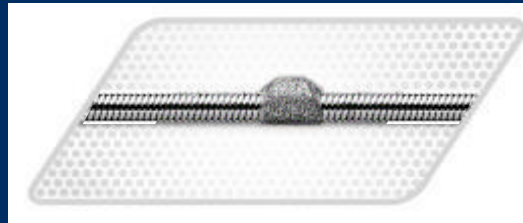
## PERIPHERAL CROWN TYPES

The Orbital Atherectomy System has the distinct ability to treat multiple vessel sizes with one crown and is available in three configurations.



### Classic Crown

- The most flexible of our crown configurations
- Designed for vessel bends, ostial lesions and distal below-the-knee procedures



### Micro Crown

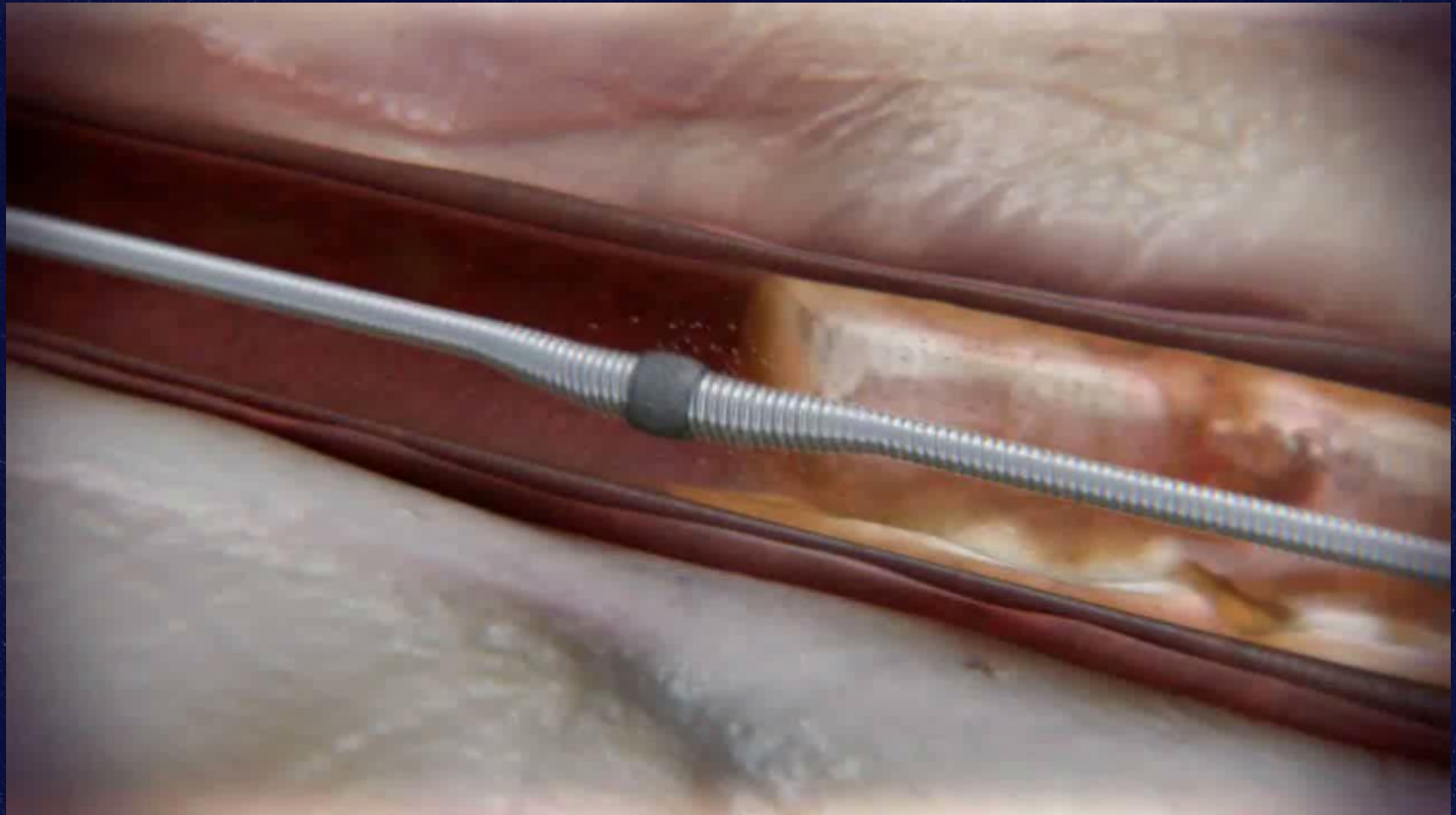
- 4Fr sheath compatibility
- Tapered crown designed to treat and cross tight lesions
- 360° sanding surface specifically designed for tight lesions



### Solid Crown

- Larger mass allows for greater sanding efficiency
- More diamond-coated surface area allows for shortest run times

# CSI's Mechanism of Action



30 $\mu$ m diamond coating,  
eccentric mounted mass

Different crowns.  
E.g. Micro Crown, 4 Fr-compatible



# Case 05 Leipzig 4: male, 58 years

## AcoTec DCBs for SFA / Apop / BTK

*Litos (0.014") & Tulip (0.018")*® DCB

### Proprietary Coating Technology

- Lipophilic coating excipient : Mg-stearate
- Paclitaxel dose =  $3\mu\text{g}/\text{mm}^2$

### Balloon sizes for BTK:

- Diameter (mm)

*Litos 0.014"*: 2.0 - 4.0, with 0.5 increment mm design

*Tulip 0.018"*: 2.0 - 12.0, with 0.5 increment mm design

- Length (mm) 20, 30, 40, 60, 80, 100, 120, (150, 200, 250, 300)

